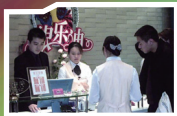


Compact & Versatile Narrow Carriage Impact Receipt Printer



Fashion



KTV



Restaurant



Payment counter



Hotel



Hospital

Easy Paper Loading



TP220

- Paper width: 76mm, 58mm
- Fast printing speed: 4.7LPS
- Better connectivity with :
Serial / Parallel / Ethernet + USB / USB / Bluetooth interface
- Original + 2 Copies
- Auto cutter (optional)



TP230 ^{NEW}

Easy Paper Loading

- Paper width: 76mm, 58mm
- Fast printing speed: 4.7LPS
- Better connectivity with :
Serial / Parallel / Ethernet + USB / USB / Bluetooth + USB / Wi-Fi + USB interface
- Original + 1 Copy
- Auto cutter



DP100

- Paper width: 142mm
- Fast printing speed: 200CPS
- Better connectivity with :
Serial / Parallel / Ethernet + USB / USB / Bluetooth / Wi-Fi + USB interface
- Original + 3 Copies



DP100F

- Paper width: 114mm, 76mm, 58mm
- Fast printing speed: 200CPS
- Better connectivity with :
Serial / Parallel / Ethernet + USB / USB / Bluetooth / Wi-Fi + USB interface
- Original + 2 Copies

Compact & Versatile Narrow Carriage Impact Receipt Printer



TP220



TP230

NEW



DP100



DP100F

Specification:

	9-pin impact dot matrix		24-pin impact dot matrix	
Print type	9-pin impact dot matrix		24-pin impact dot matrix	
Print direction	Bi-directional with logic seeking			
Print width	63mm, 45mm (paper width: 76mm, 58mm)		40 Columns (10CPI) / 101.6mm	
Print speed (10CPI)	4.7 lps (paper width: 76mm, 40 columns) 6.0 lps (paper width: 58mm, 30 columns)		Super high speed 200 CPS High speed 133 CPS Normal 67 CPS	
Fonts	/		Draft, Roman, Sans Serif, Courier, Prestige, Script, OCR-A, OCR-B, Orator	
Bar code	/		EAN-13, EAN-8, Interleaved 2 of 5, Matrix 2 of 5, Industrial 2 of 5, Code 39, Code 128 B, Code 128 C, NW-7	
Character pitch	/		10CPI, 12CPI, 15CPI, proportional	
Line space	1/6 inch, programmable in 1/144 inch increments		1/6 inch, 1/8 inch, programmable in 1/360 inch increments	
Emulation	EPSON ESC/POS		EPSON ESC/PK2, ESC/POS, STAR320	
Interface				
Buffer Memory	60KB			
Ribbon Model	JMR113	JMR132(Black): 3 million characters JMR133(purple): 4 million characters JMR134(Black): 1.5 million characters (Red): 0.75 million characters	JMR116 > 3 million characters	
Life (draft mode)	> 3 million characters			
Noise (ISO7779 standard)	<58dB(A)		<55dB(A)	
Paper feed type	Feed paper by friction		Feed paper by drive tractor	Feed paper by friction
Paper specification	Rolled paper, Width: 76mm/58mm Roll Diameter: 83mm(Maximum)		Cut sheet, Width: 76~142mm	Rolled paper, Width: 57.5, 76, 114mm, Roll Diameter: 83mm(Maximum)
Max paper thickness	0.20mm	0.30mm	0.32mm	
Copy	Original+2 copies		Original+3 copies	Original+2 copies
function				
Black mark detection			√	
Automatic Pin Break Compensation	x		√	
Automatic Pin Alternation	x		√	
Automatic Emulation Match	x		√	
Online Parameter Setting	√		√	
Auto Cutter	Optional		x	
Dimension (W×D×H)	156mm × 236mm × 131mm		233mm × 230mm × 108mm	
Weight	Approx. 1.9Kg / 2.1Kg (include cutter)		Approx. 2.9Kg	
Environmental conditions				
Operating (No condensation)	Temperature: 5~40°C, Humidity: 25%RH~80%RH		Temperature: 5~35°C, Humidity: 25%RH~80%RH	
Storage (No condensation)	Temperature: -40~55°C, Humidity: ≤93%RH (40°C)		Temperature: -40~55°C, Humidity: ≤93%RH (40°C)	
Power requirements	Input: 100~240V, 50~60Hz Output: DC24V, 2.5A		198~242V, 50~60Hz	
Safety marks	GB 4943.1 / EN 60950-1		EN 60950-1	
Certificate				

Note: 1. The technical specifications in this catalog are the laboratory measurement data which achieved under the national standard for the storage and work environment (room temperature), the specifications of the testing papers are specified in the Users' Manual.
2. The technical specifications are subject to change without notice.
3. All trademarks are the properties of their respective holders.